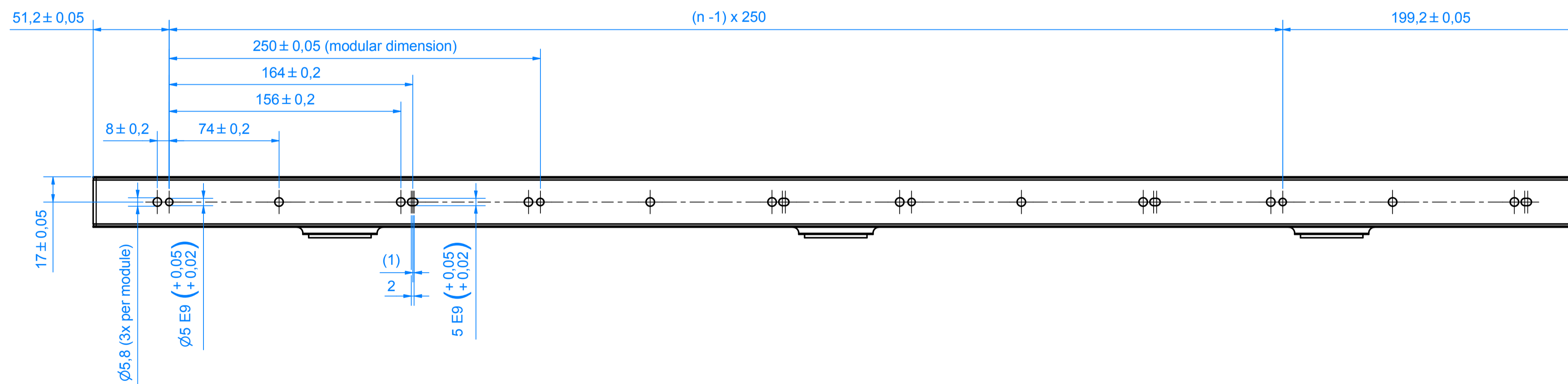
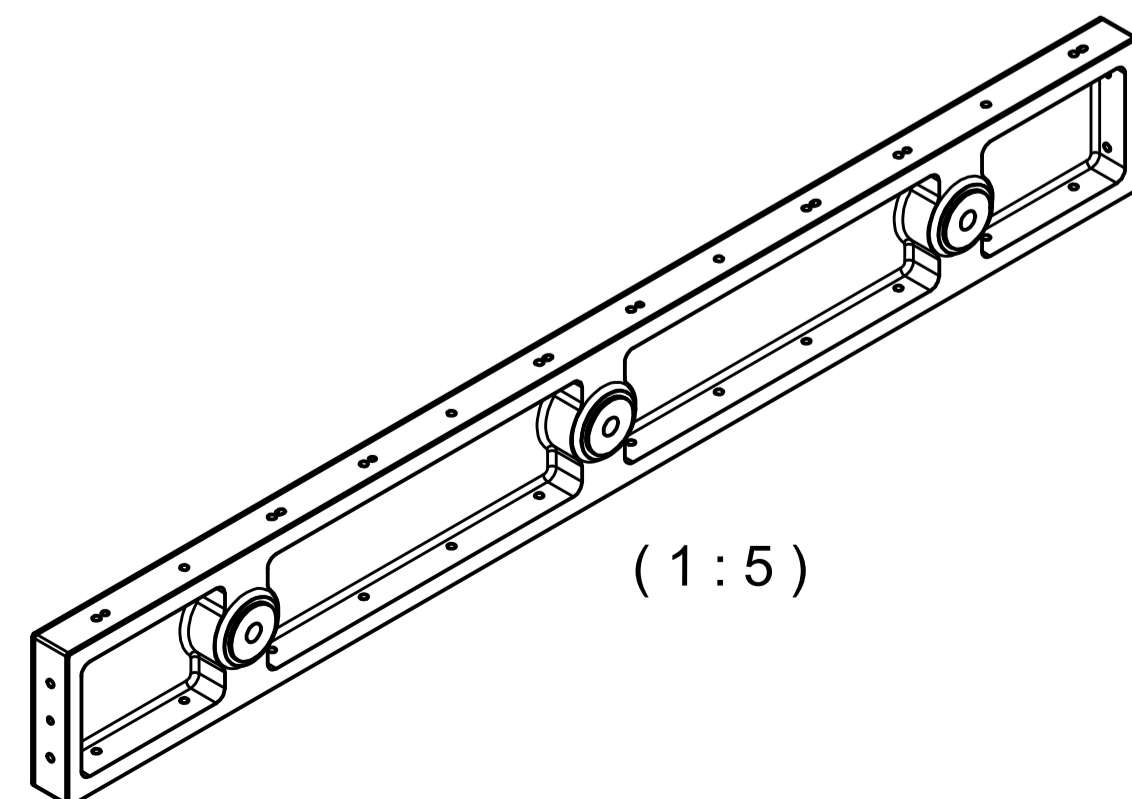
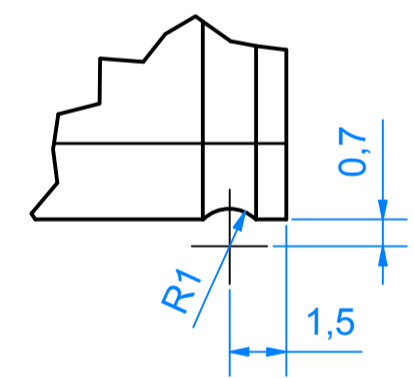


\* Total length of machine bed = (n x 250 mm) + 0,4 mm ; Length tolerance: ± 0,2 mm per 1000 mm



Z (5 : 1) (2x)  
groove circumferential



NOTES:

- This is an example drawing of a machine bed suitable for four (n = 4) XTS-Hygienic motor-modules ATH200x-0250-xxxx in a row with ATH205x-0500-xxxx mounted at either end.
- Consider to divide the whole machine bed for long systems. Keep the total length of the assembled machine bed given by the above formula\*, where "n" equals the number of motor modules in a row. Adapt the length of the end- or in between-machine-beds accordingly.
- E9 fit of dowel pin holes to be used with m6 dowel pins.
- Proposed surface finish and material according to hygienic standards.

electropolished  
Ra0,8

-0,3  
±0,1

00	eingeführt / introduced	27.11.2019	AndreasSi	Freigegeben von	ISO 2768 - H
Index	Änderungsbeschreibung	Änderungsnummer	Erstelldatum	Verantwortlicher / Erstellername	Freigegeben von
Werkstoff / material	Stainless Steel 1.4404, AISI 316L	Masse / mass	18,3 kg	Dichte / density	8,080 g/cm <sup>3</sup>
Oberfläche / surface		Fläche / area	4011509 mm <sup>2</sup>	Volumen / volume	2023126 mm <sup>3</sup>
Bezeichnung / description		Example Machine Bed XTS-Hygienic		Revision 00	
Ursprung / source		Beckhoff Automation GmbH & Co. KG		Revision 20	
ISO 157		Müllmaßstab		Blattgröße	
1 : 2		A1		1 / 1	

Copyright reserved to ISO 15016  
 This drawing remains the property of Beckhoff Automation GmbH & Co. KG  
 The property and copyright of this drawing remains the property of Beckhoff Automation GmbH & Co. KG  
 This may not be copied and reproduced, or sent and made accessible to third parties, especially competitors.  
 Every form of change is prohibited.  
 Copyright reserved to ISO 15016  
 This drawing remains the property of Beckhoff Automation GmbH & Co. KG  
 The property and copyright of this drawing remains the property of Beckhoff Automation GmbH & Co. KG  
 This may not be copied and reproduced, or sent and made accessible to third parties, especially competitors.  
 Every form of change is prohibited.