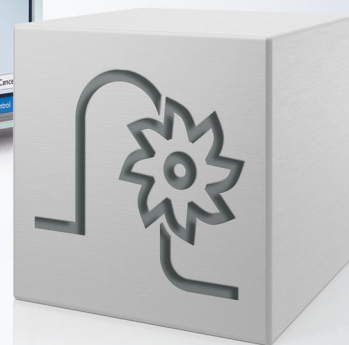
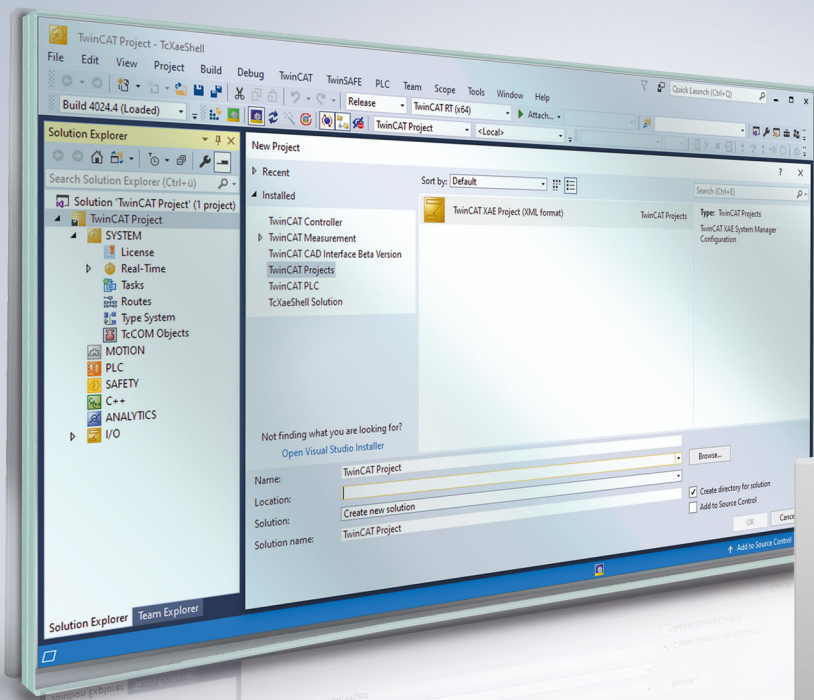


Manual | EN

TF5200 | TwinCAT 3 CNC

Clamp position offsets



Notes on the documentation

This description is only intended for the use of trained specialists in control and automation engineering who are familiar with the applicable national standards.

It is essential that the documentation and the following notes and explanations are followed when installing and commissioning the components.

It is the duty of the technical personnel to use the documentation published at the respective time of each installation and commissioning.

The responsible staff must ensure that the application or use of the products described satisfy all the requirements for safety, including all the relevant laws, regulations, guidelines and standards.

Disclaimer

The documentation has been prepared with care. The products described are, however, constantly under development.

We reserve the right to revise and change the documentation at any time and without prior announcement.

No claims for the modification of products that have already been supplied may be made on the basis of the data, diagrams and descriptions in this documentation.

Trademarks

Beckhoff®, TwinCAT®, TwinCAT/BSD®, TC/BSD®, EtherCAT®, EtherCAT G®, EtherCAT G10®, EtherCAT P®, Safety over EtherCAT®, TwinSAFE®, XFC®, XTS® and XPlanar® are registered trademarks of and licensed by Beckhoff Automation GmbH.

Other designations used in this publication may be trademarks whose use by third parties for their own purposes could violate the rights of the owners.

Patent Pending

The EtherCAT technology is patent protected, in particular by the following applications and patents:

EP1590927, EP1789857, EP1456722, EP2137893, DE102015105702

with corresponding applications or registrations in various other countries.



EtherCAT® is registered trademark and patented technology, licensed by Beckhoff Automation GmbH, Germany

Copyright

© Beckhoff Automation GmbH & Co. KG, Germany.

The reproduction, distribution and utilisation of this document as well as the communication of its contents to others without express authorisation are prohibited.

Offenders will be held liable for the payment of damages. All rights reserved in the event of the grant of a patent, utility model or design.

General and safety instructions

Icons used and their meanings

This documentation uses the following icons next to the safety instruction and the associated text. Please read the (safety) instructions carefully and comply with them at all times.

Icons in explanatory text

1. Indicates an action.
- ⇒ Indicates an action statement.

DANGER

Acute danger to life!

If you fail to comply with the safety instruction next to this icon, there is immediate danger to human life and health.

CAUTION

Personal injury and damage to machines!


If you fail to comply with the safety instruction next to this icon, it may result in personal injury or damage to machines.

NOTICE

Restriction or error

This icon describes restrictions or warns of errors.

Tips and other notes

 This icon indicates information to assist in general understanding or to provide additional information.

General example

Example that clarifies the text.

NC programming example

Programming example (complete NC program or program sequence) of the described function or NC command.

Specific version information


 Optional or restricted function. The availability of this function depends on the configuration and the scope of the version.

Table of contents

- Notes on the documentation..... 3**
- General and safety instructions 4**
- Overview of clamp position offset parameter 7**
- 1 General description 8**
 - 1.1 Links to other documents 8
 - 1.2 Classification of clamp position offset data 8
 - 1.3 Syntax and interpretation of ASCII list file 8
 - 1.4 Comments in the ASCII list file..... 9
- 2 Description of elements 10**
 - 2.1 Clamp position offset group (pzv_grp[i].*) 10
 - 2.1.1 Axis assignment of data in the clamp position offset group (pzv_grp[i].achse[j].*) 10
- 3 Example of assigning clamp position offset data ("pzv_d.lis")..... 11**
- 4 Support and Service 12**
- Index 13**

Overview of clamp position offset parameter

The clamp position offset data is sorted into a 4-column table.

- Column 1 contains the unambiguous identifier of the clamp position offset parameter called the “ID” which consists of the prefix “P-CLMP” and a unique 5-digit number, e.g. P-CLMP-00001.
- Column 2 represents the data structure which defines the parameter, e.g. pzv_grp[i].achse[j]. The structure is a categorisation aid and is described in the following section.
- Column 3 contains the “parameter” with its exact description, e.g. offset. The important thing is that “structure”+”parameter” always belong together and must therefore be configured in exactly the same way in the clamp position offset parameter list, e.g. pzv_grp[i].achse[j].versatz
- Column 4 contains the “functionality” in a summarised term/short description, e.g. axis-specific clamp position offset.

ID	Structure	Parameter	Functionality/short description
P-CLMP-00001 [▶ 10]	pzv_grp[i].achse[j].	offset	Axis-specific clamp position offset

1 General description

1.1 Links to other documents

For the sake of clarity, links to other documents and parameters are abbreviated, e.g. [PROG] for the Programming Manual or P-AXIS-00001 for an axis parameter.

For technical reasons these links only function in the Online Help (HTML5, CHM) but not in pdf files since pdfs do not support cross-linking.

1.2 Classification of clamp position offset data

Clamp position offsets can be defined in different groups in the clamp position offset data list. The required clamp position offset group can be loaded by selecting the clamp position offset index before program start-up. Each clamp position offset group contains the clamp position offset data for all path axes and is generally referred to below as **clamp position offset**.


The clamp position offset data is included in the coordinates of all path axes at program start-up. The axis index corresponds to the channel-internal axis index. The initial axis configuration of the NC channel is defines in the channel parameters [CHAN// Section: Configuration of path axes].

Value ranges of parameters may also be defined by stating a limit resulting from data width, e.g. MAX(UNS32), etc.

1.3 Syntax and interpretation of ASCII list file

An interpreter copies the entries in the ASCII list file into identical internal structures which are then checked for plausibility. To ensure reliable controller start-up every time, defective entries found by the plausibility check are replaced by default values.

Unknown entries are not taken over. These irregularities are displayed by warning messages. We advise you to investigate the cause for these warning messages and remove defective entries from the ASCII list file.

 The following agreement applies to BOOLEAN data:

Value	Meaning
0	Definition of FALSE
1	Definition of TRUE

1.4 Comments in the ASCII list file

Comments can be in an entire line or can be added at the end of a line.

With a comment spanning an entire line, the comment character "#" must be placed at the start of the line and followed by a blank.

If a comment is to be inserted at the end of a line, only a blank is required before the comment. However, if a string was defined in the line, the comment must be preceded by the comment character "(".

Blank lines are also possible.

Comments in the ASCII list file

```
# *****
# Data
# *****
#
# Listing

dummy[1] 1 Comment
dummy[2] 1 # Comment
dummy[3] 1 ( Comment
dummy[4] 1 /* Comment
...
...
beispiel[0].bezeichnung STRING_2 (Comment: comment brackets required!)
```

2 Description of elements

2.1 Clamp position offset group (pzv_grp[i].*)

Each clamp position offset group "pzv_grp[i]" contains the clamp position offsets for all path axes. Before program start-up, a clamp position offset group can be selected from the operating menu.

Structure name	Index
pzv_grp[i]	i = 0 ... 149 (maximum number of clamp position offset groups: 150, application-specific)

2.1.1 Axis assignment of data in the clamp position offset group (pzv_grp[i].achse[j].*)

This structure element assigns clamp position offsets to path axes. The axis index corresponds to the channel-internal axis index.

Structure name	Index
achse[j]	j = 0 ... 31 (maximum number of axes per channel: 32, application-specific)

2.1.1.1 Axis-specific clamp position offset (P-CLMP-00001)

P-CLMP-00001	Axis-specific clamp position offset
Description	An offset parameter is reserved for each axis in each clamp position offset group.
Parameter	pzv_grp[i].achse[j].versatz
Data type	SGN32
Data range	$\text{MIN}(\text{SGN32}) \leq \text{versatz} \leq \text{MAX}(\text{SGN32})$
Dimension	0.1 μm or 0.0001°
Default value	0
Remarks	

3 Example of assigning clamp position offset data ("pzv_d.lis")

Configuration with 3 axes:

```
# *****
# Clamp position offset data
# *****
# Important note : Behind the comment character `#`
# a blank (space) must be added
# CAUTION: Clamp position offset is expected in the unit 0.1 im.
# *****
#
# =====
# 1st clamp position offset group
# =====
pzv_grp[0].achse[0].versatz      100000      # Offset by 10 mm
pzv_grp[0].achse[1].versatz    200000      # Offset by 20 mm
pzv_grp[0].achse[2].versatz    300000      # Offset by 30 mm
#
# =====
# 2nd clamp position offset group
# =====
pzv_grp[1].achse[0].versatz     -100000     # Offset by -10 mm
pzv_grp[1].achse[1].versatz    200000      # Offset by 20 mm
pzv_grp[1].achse[2].versatz    400000      # Offset by 40 mm
#
# =====
# 3rd clamp position offset group
# =====
pzv_grp[2].achse[0].versatz     40000      # Offset by 4 mm
pzv_grp[2].achse[1].versatz     50000      # Offset by 5 mm
pzv_grp[2].achse[2].versatz     60000      # Offset by 6 mm
```

4 Support and Service

Beckhoff and their partners around the world offer comprehensive support and service, making available fast and competent assistance with all questions related to Beckhoff products and system solutions.

Download finder

Our [download finder](#) contains all the files that we offer you for downloading. You will find application reports, technical documentation, technical drawings, configuration files and much more.

The downloads are available in various formats.

Beckhoff's branch offices and representatives

Please contact your Beckhoff branch office or representative for [local support and service](#) on Beckhoff products!

The addresses of Beckhoff's branch offices and representatives round the world can be found on our internet page: www.beckhoff.com

You will also find further documentation for Beckhoff components there.

Beckhoff Support

Support offers you comprehensive technical assistance, helping you not only with the application of individual Beckhoff products, but also with other, wide-ranging services:

- support
- design, programming and commissioning of complex automation systems
- and extensive training program for Beckhoff system components

Hotline: +49 5246 963-157
e-mail: support@beckhoff.com

Beckhoff Service

The Beckhoff Service Center supports you in all matters of after-sales service:

- on-site service
- repair service
- spare parts service
- hotline service

Hotline: +49 5246 963-460
e-mail: service@beckhoff.com

Beckhoff Headquarters

Beckhoff Automation GmbH & Co. KG

Huelshorstweg 20
33415 Verl
Germany

Phone: +49 5246 963-0
e-mail: info@beckhoff.com
web: www.beckhoff.com

Index

P

P-CLMP-00001	10
--------------	----

More Information:
www.beckhoff.com/TF5200

Beckhoff Automation GmbH & Co. KG
Hülshorstweg 20
33415 Verl
Germany
Phone: +49 5246 9630
info@beckhoff.com
www.beckhoff.com

