

Manual | EN

TS1800-0030

TwinCAT 2 | PLC HMI CE

Supplement | System

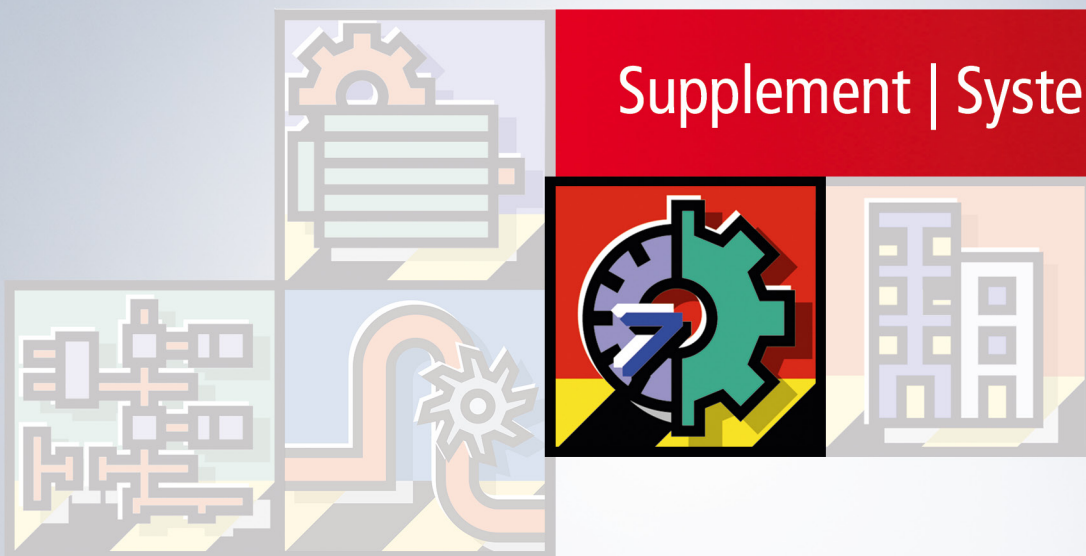


Table of contents

1 Foreword	5
1.1 Notes on the documentation	5
1.2 Safety instructions	6
1.3 Notes on information security.....	7
2 Overview	8
3 Visualization features	9
3.1 Restrictions	10
4 Installation, Start and Operating	12

1 Foreword

1.1 Notes on the documentation

This description is only intended for the use of trained specialists in control and automation engineering who are familiar with applicable national standards.

It is essential that the documentation and the following notes and explanations are followed when installing and commissioning the components.

It is the duty of the technical personnel to use the documentation published at the respective time of each installation and commissioning.

The responsible staff must ensure that the application or use of the products described satisfy all the requirements for safety, including all the relevant laws, regulations, guidelines and standards.

Disclaimer

The documentation has been prepared with care. The products described are, however, constantly under development.

We reserve the right to revise and change the documentation at any time and without prior announcement. No claims for the modification of products that have already been supplied may be made on the basis of the data, diagrams and descriptions in this documentation.

Trademarks

Beckhoff®, TwinCAT®, TwinCAT/BSD®, TC/BSD®, EtherCAT®, EtherCAT G®, EtherCAT G10®, EtherCAT P®, Safety over EtherCAT®, TwinSAFE®, XFC®, XTS® and XPlanar® are registered trademarks of and licensed by Beckhoff Automation GmbH.

Other designations used in this publication may be trademarks whose use by third parties for their own purposes could violate the rights of the owners.

Patent Pending

The EtherCAT Technology is covered, including but not limited to the following patent applications and patents:

EP1590927, EP1789857, EP1456722, EP2137893, DE102015105702
with corresponding applications or registrations in various other countries.



EtherCAT® is a registered trademark and patented technology, licensed by Beckhoff Automation GmbH, Germany

Copyright

© Beckhoff Automation GmbH & Co. KG, Germany.

The reproduction, distribution and utilization of this document as well as the communication of its contents to others without express authorization are prohibited.

Offenders will be held liable for the payment of damages. All rights reserved in the event of the grant of a patent, utility model or design.

1.2 Safety instructions

Safety regulations

Please note the following safety instructions and explanations!
Product-specific safety instructions can be found on following pages or in the areas mounting, wiring, commissioning etc.

Exclusion of liability

All the components are supplied in particular hardware and software configurations appropriate for the application. Modifications to hardware or software configurations other than those described in the documentation are not permitted, and nullify the liability of Beckhoff Automation GmbH & Co. KG.

Personnel qualification

This description is only intended for trained specialists in control, automation and drive engineering who are familiar with the applicable national standards.

Description of symbols

In this documentation the following symbols are used with an accompanying safety instruction or note. The safety instructions must be read carefully and followed without fail!

DANGER

Serious risk of injury!

Failure to follow the safety instructions associated with this symbol directly endangers the life and health of persons.

WARNING

Risk of injury!

Failure to follow the safety instructions associated with this symbol endangers the life and health of persons.

CAUTION

Personal injuries!

Failure to follow the safety instructions associated with this symbol can lead to injuries to persons.

NOTE

Damage to the environment or devices

Failure to follow the instructions associated with this symbol can lead to damage to the environment or equipment.



Tip or pointer

This symbol indicates information that contributes to better understanding.

1.3 Notes on information security

The products of Beckhoff Automation GmbH & Co. KG (Beckhoff), insofar as they can be accessed online, are equipped with security functions that support the secure operation of plants, systems, machines and networks. Despite the security functions, the creation, implementation and constant updating of a holistic security concept for the operation are necessary to protect the respective plant, system, machine and networks against cyber threats. The products sold by Beckhoff are only part of the overall security concept. The customer is responsible for preventing unauthorized access by third parties to its equipment, systems, machines and networks. The latter should be connected to the corporate network or the Internet only if appropriate protective measures have been set up.

In addition, the recommendations from Beckhoff regarding appropriate protective measures should be observed. Further information regarding information security and industrial security can be found in our <https://www.beckhoff.com/secguide>.

Beckhoff products and solutions undergo continuous further development. This also applies to security functions. In light of this continuous further development, Beckhoff expressly recommends that the products are kept up to date at all times and that updates are installed for the products once they have been made available. Using outdated or unsupported product versions can increase the risk of cyber threats.

To stay informed about information security for Beckhoff products, subscribe to the RSS feed at <https://www.beckhoff.com/secinfo>.

2 Overview

TwinCAT PLC HMI CE is a system needed for the execution of visualizations on BECKHOFF CE-based devices generated in TwinCAT PLC Control.

If a control program contains associated visualizations these are displayed in full screen mode when the **TwinCAT PLC HMI CE** is available on CE based systems.

The user can operate the control and monitoring functions contained in the underlying project via the mouse or the keyboard. This is possible even if the TwinCAT PLC project file is read-protected. However, the user cannot edit the control program and no menus or toolbars are available, i.e., only pure 'operation' of the visualization elements is available.

The main control and monitoring functions for a project intended for the operator version therefore must be associated with the visualization elements during project creation and operated in online mode. A special input facility is available for this purpose in the configuration dialog for a visualization element.

By seamlessly integrating the development platform for the visualization masks into the PLC programming system **TwinCAT PLC HMI CE** offers advantages other visualizations simply cannot come up to:

- A tag list of the variables to be used is not needed. It is possible to work directly with the TwinCAT PLC Control variables.
- Variable values in input fields can be modified by expressions (e.g., "Variable1+ Variable2 * 12 + 5")
- A mighty place-holder concept allows the user to create object-oriented masks.

3 Visualization features

It is shown in this table which possibilities the visualisation offers with TwinCAT.

Feature	PLC Control	PLC HMI (TS1800)	PLC HMI Web (TS1810)	PLC HMI CE (TS1800-0030)	Comment
Current test version:	Build 1010	2.10.0.900	1.0.0.7	1.0.9.10	From TwinCAT 2.10 Build 1334
Rectangle	✓	✓	✓	✓	
Rounded rectangle	✓	✓	✓	✓	
Ellipse	✓	✓	✓	✓	
Polygon	✓	✓	✓	✓	
Curve	✓	✓	✓	✓	
Pie	✓	✓	✓	✓	
Bitmap	✓	✓	✓	✓	
Visualisation	✓	✓	✓	✓	
Button	✓	✓	✓	✓	
WMF/JPG File	✓	✓	✓	✓	
Table	✓	✓	✓	✓	
ActiveX element	✓	✓	✗	✗	
Trend	✓	✓	✗	✓ / ✗	HMI CE: Only online trend is available
Alarm table	✓	✓	✗	✗	
Meter	✓	✓	✓	✓	
Bar display	✓	✓	✓	✓	
Histogram	✓	✓	✗	✗	
Invisible elements	✓	✓	✓	✓	
Change color	✓	✓	✓	✓	
Background bitmap	✓	✓	✓	✓	
Button background	✓	✓	✓	✓	
Tooltip	✓	✓	✓	✓	HMI CE: Elements not too near to the edge or tooltip is outside the window

Feature	PLC Control	PLC HMI (TS1800)	PLC HMI Web (TS1810)	PLC HMI CE (TS1800-0030)	Comment
Security	✓	✓	✓	✓	
Placeholder	✓	✓	✓ / ✗	✓ / ✗	Web/HMI CE: Zoom to visu with placeholders in the zoom command is not possible
Print function	✓	✓	✗	✗	
Password change	✓	✓	✓	✓	
Change user level	✓	✓	✓	✓	
Language dialog	✓	✓	✓	✓	
Language automatic change	✓	✓	✓	✓	
Exit	✓	✓	✗	✗	
Trace	✓	✓	✗	✗	
Text input 'Text'	✓	✓	✓	✓	Web: Please don't exceed the maximum string length of your variable HMI CE: The hidden function is not supported
Text input 'Numpad'	✓	✓	✓	✓	HMI CE: The hidden function is not supported
Text input 'Keypad'	✓	✓	✓	✓	Web: Please don't exceed the maximum string length of your variable HMI CE: The hidden function is not supported

3.1 Restrictions

Intern commands

PRINT

Printout of the current visualization is not possible.

EXITPROGRAM

This command is not supported.

TRACE

This command for opening the Sampling Trace window is not supported.

SAVEPROJECT

This command for saving the project is not usable for the Target-Visualization.

Grafic formats

In the Target-Visualization currently only simple bitmaps are supported. Not supported formats: .jpg, .tif, .ico
The format .jpg is supported from version 1.0.9 of the TargetVisu DLL.

Others**Slider in Table**

The slider for scrolling is not displayed.

Texts

Texts exceeding the borders of an element currently do not get clipped.

Alarm handling

TheAlarming is not supported.

Trend

The Online Trend is supported from Version 1.0.8 (without history).

Place holder

The delivery of parameter to replace placeholder at the call is not supported.

Example:

```
<Visuname>(<Placeholder1>:=<Text1>, <Placeholder2>:=<Text2>, ..., <Placeholder n>:=<Textn>)
```

VAR_IN_OUT

It is not possible to use VAR_IN_OUT variables in TwinCAT HMI CE.

Visu-Side

It is not possible to use the scroll bar in the HMI CE on your visualisation side.

4 Installation, Start and Operating

1. General

- The **"TwinCAT PLC HMI CE"** can be ordered pre-installed on Beckhoff CE devices.
- **"TwinCAT PLC HMI CE"** - a product of BECKHOFF, Germany - is a visualization package for the Beckhoff devices based on operating system CE.

2. Product Description

Full description of functionality and full documentation is available under TwinCAT PLC Control, ["Visualization"](#)

3. Prerequisites

The **"TwinCAT PLC HMI CE"** needs

- a CE device with at least 128 RAM.
- a CE based image HMI V1.90 or higher.
- a CE device with at least TwinCAT-Level "PLC"
- For designing user interfaces TwinCAT V2.10 Build 1242 (or higher) is required on the host-pc.

4. License

"TwinCAT PLC HMI CE" Visualization is not for free, but instead a runtime license per CPU.

4.1 Preinstalled on CE device/ License

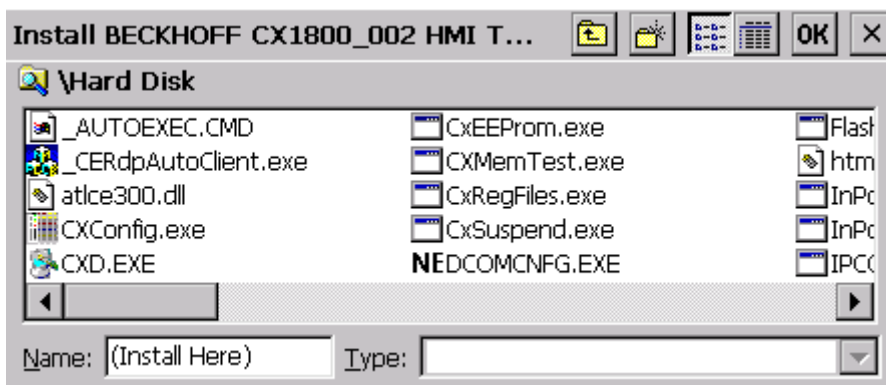
If ordered as described above, the **"TwinCAT PLC HMI CE"** is already pre-installed and ready to use on the CE device - it contains a valid license.

4.2 Installation of TwinCAT PLC HMI CE

The installation file **"TwinCAT_PLC_HMI_CE.xxxx.CAB"** is to be executed via regular double-click on it.



- For CE-X86 based devices please use **"TwinCAT_PLC_HMI_CE..CAB/586"** file.
- For CE-ARM based devices please use **"TwinCAT_PLC_HMI_CE..CAB"ARM** file.
- As target directory, the pre-selected (default) directory **"hard disk"** has to be confirmed with **"OK"**!
- After confirmation with **"OK"**, the installation into the correct target folder gets executed:.



- After installation of the component into the correct target folder **"hard disk"** the installation file **"TwinCAT_PLC_HMI_CE.xxxx.CAB"** gets removed automatically.
- Please suspend the CE device once after installation by shutting it down via **"Start-> Suspend"**. Then - and only then -, the settings will be saved into the registry on the CE device Compact Flash.

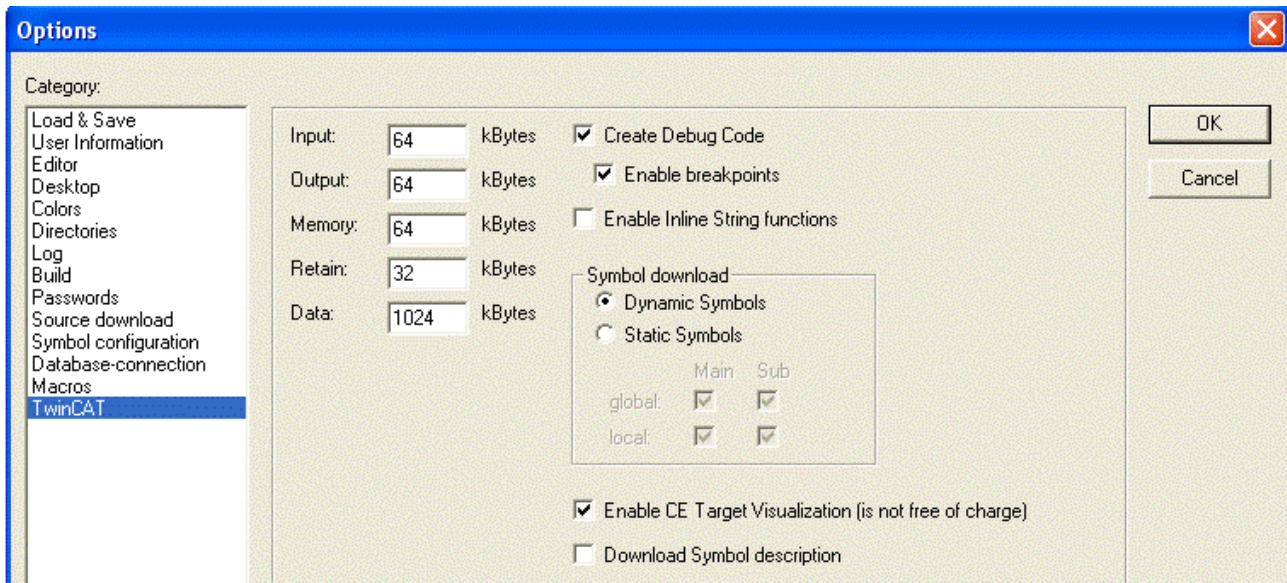
- Configuration of Target Visu is done in TwinCAT PLC Control

5. Configuration

Configuration of "TwinCAT PLC HMI CE" is done in TwinCAT PLC Control. After designing the UI screens in the PLC-Control the download to device has to be activated once.

Activation is done in PLC Control : Select menu "Project" , "Options..." and area TwinCAT. Check "Enable CE Target Visualization".

i TwinCAT PLC HMI CE" Visualization is not for free, but instead a runtime license per CPU.



The screen resolution is defined in the file "**C:\TwinCAT\PLC\TwinCAT PLC Control.ini**"

```
[TwinCAT PLC Control]
VisuWidth=640
VisuHeight=480
```


More Information:
www.beckhoff.com/ts1800

Beckhoff Automation GmbH & Co. KG
Hülshorstweg 20
33415 Verl
Germany
Phone: +49 5246 9630
info@beckhoff.com
www.beckhoff.com

